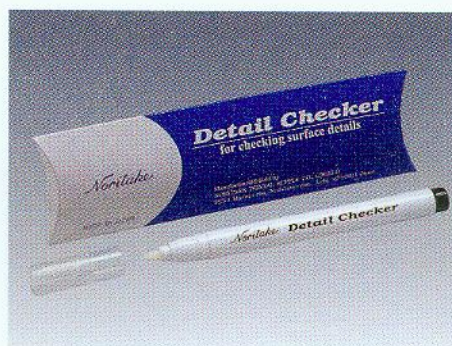


## NORITAKE PORCELAIN MAT



The MAT, made from alumina / ceramic fiber, is designed to hold all-ceramic crowns and porcelain laminate veneers during baking.

## DETAIL CHECKER



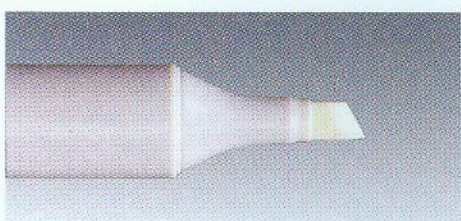
It can easily check the surface details, characters and colors of porcelain teeth at the stage of morphological correction.

## MAGIC SET

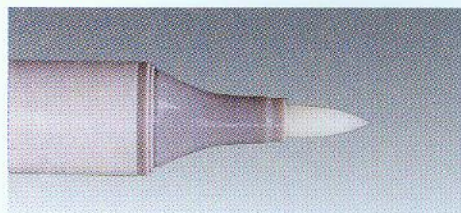


### MAGIC FORMER

MAGIC FORMER is dry-and-set type Margin Porcelain forming liquid. It has strong adhesive properties with opaque porcelain and becomes quite hard when it dries. It is easy to remove the coping from the die without disturbing the margin porcelain.



Broad



Brush

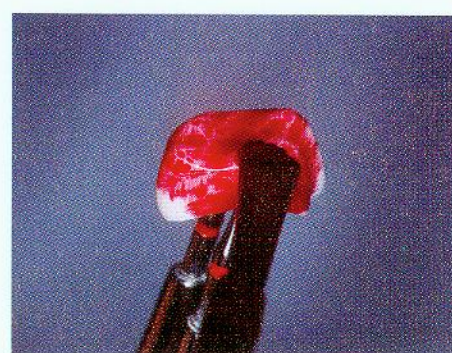
### MAGIC SEPARATOR

MAGIC SEPARATOR is a pen-type porcelain separator. It is used to separate porcelain from the model material in margin porcelain area, on the gingival surface of pontics and in adjacent contact area.

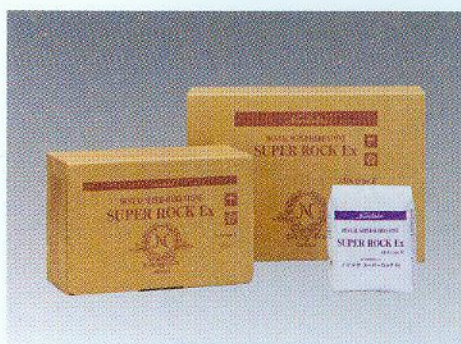
## NORITAKE CRACK FINDER (2 BOTTLES SET)



Noritake Crack Finder is the liquid to find any cracks in zirconia and alumina frameworks. It easily finds the cracks by the color of the liquid that penetrates into the cracks. The liquid will be completely burn out without affecting the framework shade even if the liquid remains a little on the frameworks.



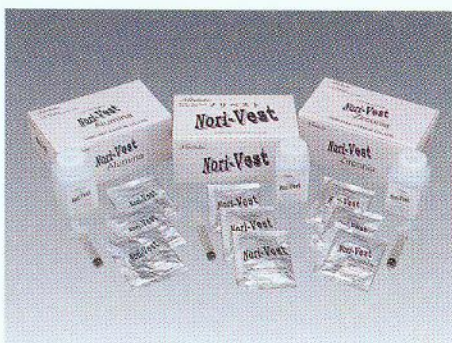
## NORITAKE SUPER ROCK EX



The flow of NORITAKE SUPER ROCK EX is superior to conventional products and its thixotropic properties facilitate handling. It easily fills and reproduces the finest details of the impression. Two colors, BROWN and GRAY, are available.

BROWN	3kg
GRAY	25lbs (11.34kg)
	50lbs (22.68kg)

## NORI-VEST / NORI-VEST ALUMINA / NORI-VEST ZIRCONIA



NORI-VEST series are refractory die material for porcelain inlays, onlays and all ceramic crowns.

NORI-VEST : for EX-3

NORI-VEST ALUMINA : for CERABIEN

NORI-VEST ZIRCONIA : for CZR

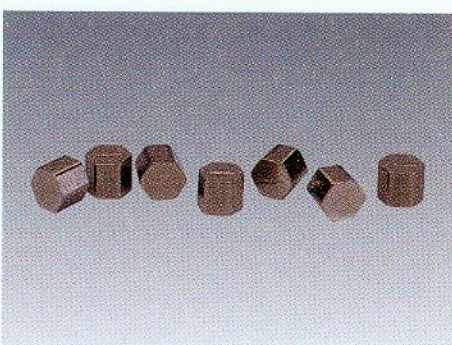
- It has a sufficient strength to withstand easily baking and build-up.
- NORI-VEST is easy to remove after the porcelain is baked, reducing the risk of breaking the Inlays.
- The mixed material flows easily, filling all the details in the impression.
- The fit is excellent.

## NORITAKE SOLDERING SET



This system was developed to make precise soldering easily. It is suitable for both pre-and post-soldering of porcelain-fused-to-metal restoration and full cast metal crowns.

## NORITAKE SUPER ALLOY EX-3 (NICKEL-CHROME ALLOY)



A non-precious dental alloy for porcelain-fused-to-metal restorations. This metal is an ideal match for NORITAKE EX-3 PORCELAIN in thermal expansion coefficient. It has a high castability and shows an excellent bonding with EX-3 PORCELAIN.